



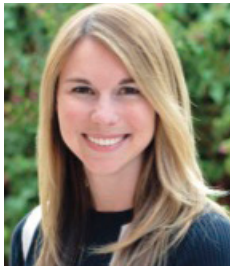
Image © Krista Schlyer.com

Wild Freedom: The Border and its Environmental Impact

Wednesday, Nov. 15, 2017

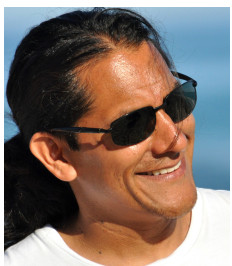
12:00 p.m. – 1:00 p.m. | Memorial Union, Gold room 207

Join videographer and producer Samantha Lloyd for a screening of the documentary-short *Wild Freedom: The Border and its Environmental Impact*, followed by a discussion of the environmental impacts of policies governing the Mexico-US border with Samantha Lloyd, Jan Schipper, and Sergio Avila. Moderated by Andrew Maynard.



Samantha Lloyd | Videographer

Samantha Lloyd is a graduate of the ASU Master of Science and Technology Policy Program, and a multimedia specialist in the ASU School for Life Sciences. *Wild Freedom* combines her passion for the environment and the policies that impact it, with her skills as an accomplished videographer-story teller.



Sergio Avila-Villegas | Wildlife Biologist

For twenty years, Sergio has worked in the non-profit sector in local and regional conservation efforts along the U.S.-Mexico borderlands as a conservation scientist, wildlife researcher and facilitator of bi-national conservation action. He was recently appointed a member of City of Tucson's Committee on Climate, Energy and Sustainability.



Jan Schipper | Phoenix Zoo

Jan Schipper is a conservation biologist and wildlife ecologist with over 20 years of research experience in Central and South America across a wide variety of mammalian species, including a status assessment of the world's mammals. He is the Field Conservation Research Director at Phoenix Zoo, and adjunct faculty at ASU.